



## 725 Selectable Gallonage Nozzle (360 - 950 LPM) with 2 1/2" BI Adaptor

### #725-BI



#### Accessories:



BI Adaptor - 2.5"



Foam Tube

NO. 984  
Length 536mm  
Weight 1.09kg

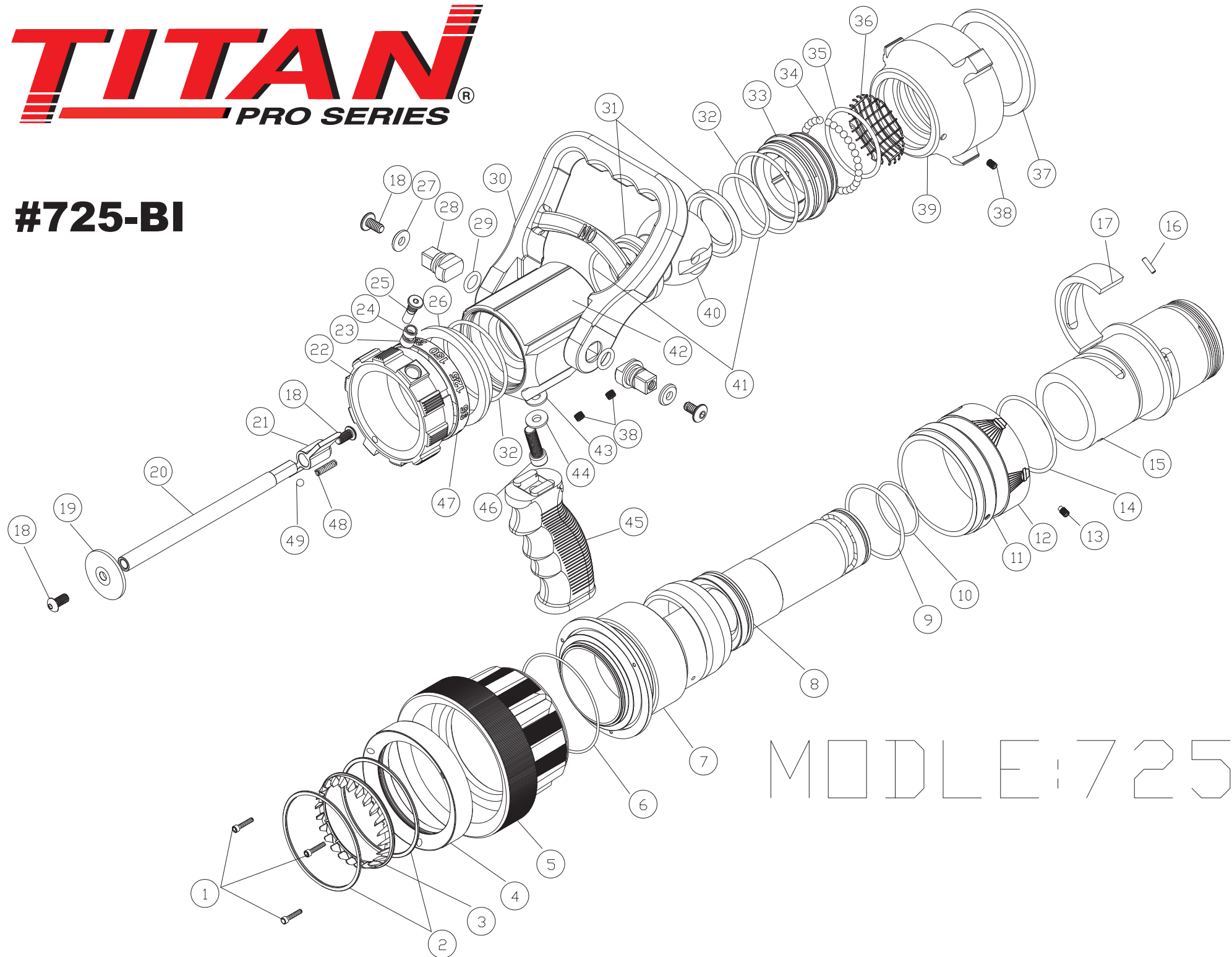
- ◆ Designed for versatility with multiple flow settings and combinations of fog and stream
- ◆ Selectable flow at a pressure. Once the flow is selected, it does not change with the pattern
- ◆ Detent design for the flow selector
- ◆ Stainless steel spinning teeth produce wide protective fog for firefighters
- ◆ Flush debris without shutting down
- ◆ 1/4 turn from straight stream to fog
- ◆ Ball shutoff
- ◆ Meets NFPA1964 Standard
- ◆ Constructed for durability with stainless steel components, protective front bumper, and metal selector ring
- ◆ Lightweight hardcoat anodized aluminum
- ◆ Provides NH, BSP and NPSH standard swivels for choice

Flow Control Style	Selectable flow at a pressure. Flow does not change the pattern
Flow Settings at 100 PSI (7Bar)	360-475-550-750-950 LPM (95-125-150-200-250 GPM)
Coupling Size	2.5" (65mm)
Weight	3.1kg
Length	272mm

# TITAN<sup>®</sup>

PRO SERIES

## #725-BI



MODEL: 725