



715 Selectable Gallonage Nozzle (115-230-360-475 LPM)

#715-BI



- ◆ Designed for versatility with multiple flow settings and combinations of fog and stream
- ◆ Selectable flow at a pressure. Once the flow is selected, it does not change with the pattern
- ◆ Detent design for the flow selector
- ◆ Stainless steel spinning teeth produce wide protective fog for firefighters
- ◆ Flush debris without shutting down
- ◆ 1/4 turn from straight stream to fog
- ◆ Ball shutoff
- ◆ Meets NFPA1964 Standard
- ◆ Constructed for durability with stainless steel components, protective front bumper, and metal selector ring
- ◆ Lightweight hardcoat anodized aluminum
- ◆ Provides NH, BSP and NPSH standard swivels for choice

Accessories:



BI Adaptor - 2.5"

Foam Tube



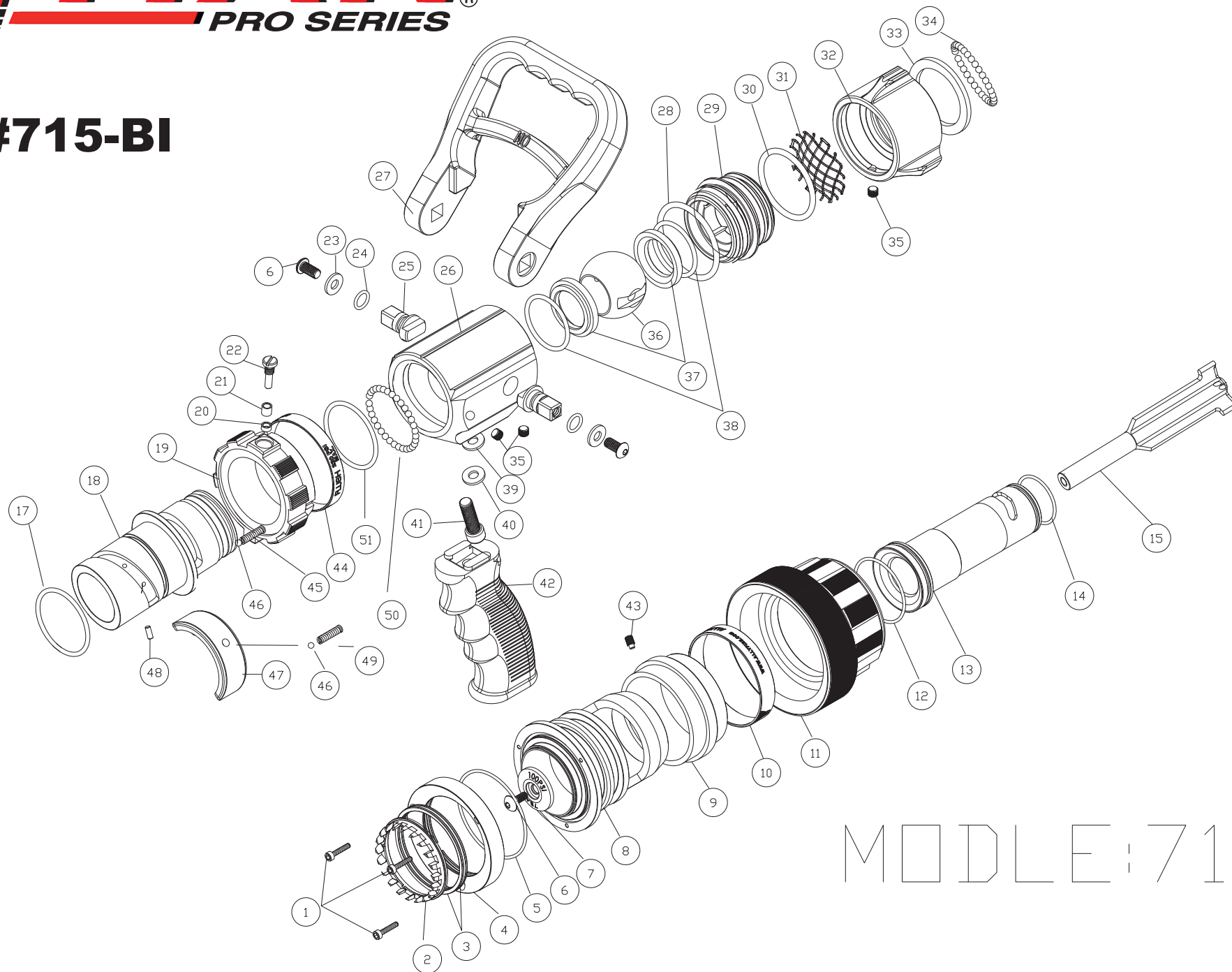
NO. 982 Length 536mm Weight 1.09kg

Flow Control Style	Selectable flow at a pressure. Flow does not change the pattern
Flow Settings at 100 PSI (7Bar)	115-230-360-475 LPM (30-60-95-125 GPM)
Coupling Size	1.5" (38mm)
Material	Lightweight Aluminum
Weight	1.9kg
Length	228mm

TITAN[®]

PRO SERIES

#715-BI



MODEL: 715